

# Newport Hills Community Club



Winter 2011 Newsletter

---

## Mission and Objectives

The Newport Hills Community Club (NHCC) is a volunteer neighborhood organization that serves its membership by:

- disseminating news and information via the web and newsletter;
- supporting and participating in community improvements
- acting as a forum for issues of importance to the neighborhood
- promoting regular social events throughout the year

Since the Club's inception in 1959, it relies on volunteers to accomplish its Mission and Objectives. Join the Board of Directors and your neighbors at the General Membership Meetings in March and October and at Board meetings on the third Tuesday of each month. All meetings are held at 7:00pm at the Newport Hills Community Church, 5833 119th Avenue SE. Membership dues are voluntary and are \$10.00 per year. (*Note: Dues are not tax deductible because the Club is a neighborhood association.*) The Club's mailing address is 5806A 119th Ave SE, PMB #222, Bellevue WA 98006.

---

## The President's Message & Neighborhood Updates

Lisa Viereck



### Quality of Life, Changes, Redevelopment/Redistricting, Collaboration

The NHCC remains an advocate on behalf of residents to help sustain and improve the quality of life that we enjoy here in Newport Hills. This is why the NHCC leadership works so closely with the City of Bellevue (COB) and cultivates partnerships with the Bellevue School District (BSD), merchants, business owners, volunteers, churches, NH Swim and Tennis Club, and neighborhood organizations just to name a few.

We also remain proactive by staying ahead of changes to prevent our beloved Newport Hills from following unconstructive paths which other urban communities have traveled. Experienced and smart collaborative planning between Newport Hills residents, NHCC, property owners and the COB is in the works! Bellevue is a city in transition and neighborhoods are one of the areas where change is clearly visible. Newport Hills Schools, commercial property characteristics, zoning changes, home sales, economic impacts, redistricting issues, transportation, jobs and evolving demographics are indicators that change can influence our quality of life here.

The neighborhood voice for redistricting school and hospital boundaries and redevelopment echoes throughout Newport Hills and continues to be of concern for many tax payers and residents. If the community wants to support redevelopment and redistricting in Newport hills then it is more important than ever for NHCC area trustees, neighbors, property owners and businesses to become more collaborative and informed via the NHCC and the COB.

If you are a block captain or the like, please share your contact information with your respective area trustee and become a conduit of information to and from your neighbors. We are a "community club" and it is up to all us to reach out, stay connected, be informed, help prevent crime, attend FUN community events, and be an active participant at monthly NHCC meetings. Let's stay ahead of these challenging times and continue to support each other as neighbors, establish block watch groups and cultivate friendships.

Feel free to share your voice for redevelopment and redistricting at the NHCC monthly meetings, especially in the commercial areas, your new community park on SE 60th Street, respective school district and hospital boundaries. Newport Hills is beginning to bud with renewal however, if the community wants to truly blossom into a better neighborhood through redevelopment, residents may want to become more involved and collaborate with the COB and property owners on a higher level. This process may lead the community to revisiting the Newport Hills comprehensive plan with the COB over the next few years. Newport Hills is transitioning and I encourage the collaboration between

residents, merchants, property owners, the Bellevue School District, the NHCC and the City of Bellevue. Thank you for your neighborly spirit and positive teamwork as we build a better community together in Newport Hills!

### **Newport Hills/Lake Heights Public Art Project**

Residents from Newport Hills and Lake Heights continue to collaborate in a joint neighborhood project, with artist Bruce Myers designing a pair of bus shelters and additional artwork. Together these will reflect and enhance the character of our community. The community selected 119th Avenue SE, between SE 56th and 60th streets, as the site for the artwork. The final installation will depend on budget availability. A model of the new public art project was on display at the Newport Hills Community Church in October for public comment.

The art panel recently met to review the public comments which were very positive overall. Art selection panelists include neighborhood residents Lisa Viereck, Debra Haraldson, Cheryl Nygaard, Barbara Moffat, Michelle Hilhorst, Arts Commissioner Genevieve Tremblay, and public artist Jen Dixon. Many thanks to the panelist who volunteered their time for over three years! The Newport Public Art design was recommended by the art selection panel and the Bellevue Arts Commission. Bruce plans to build the components over the winter and spring. Bus shelter components will go to Metro to attach to the shelters. A Metro representative told city arts specialist Mary Pat Byrne [mpbyrne@bellevuewa.gov](mailto:mpbyrne@bellevuewa.gov) that their crews will be busy installing shelters for the Rapid Ride lines elsewhere in King County over the summer. They will complete our art shelters in the fall or sooner. Meanwhile, work continues on the landscape enhancement project with City staff member Patti Wilma [pwilma@bellevuewa.gov](mailto:pwilma@bellevuewa.gov), who will talk with property owners along 119<sup>th</sup>, explaining the project and gaining their consent for including their properties. The City has a website for the Newport Hills Public Art project which will include links to information on the landscaping project along with updates on the art. [http://www.bellevuewa.gov/nh-lh\\_publicart.htm](http://www.bellevuewa.gov/nh-lh_publicart.htm)

### **Enhanced Right of Way and Urban Boulevards Project on 119<sup>th</sup> Avenue**

Where 119th crosses SE 56th and 60th streets is designated as Urban Boulevard and Gateway intersections. This project is a partnership with the Bellevue Arts Commission and the Newport Hills/Lake Heights Public Art Project. The City will install landscaping, seating, way finding, enhanced crosswalks, and street banners. The intent is to upgrade the appearance and quality of the pedestrian environment and create a sense of place based on the community's ties to the land and natural materials. The design will be inspired by Bruce Myers' rain chain and bus stop designs. The concept will follow the guiding principles set for the 2008 neighborhood identity project.

The Newport Hills shopping district is likely to redevelop in the future. Urban Boulevard enhancements would encourage pedestrian activity, visually enhance the vicinity and potentially encourage private-property improvements. For more information visit <http://www.bellevuewa.gov/urban-boulevards.htm>

### **Newport Hills Neighborhood Dog Owners**

Newport Hills residents have created a new dog blog and email distribution list so neighbors may communicate and gather with their dogs throughout the community. If you would like more information regarding this group or would like to join, please contact your neighbor Tom Buerger @ [Tom.Buerger@cobaltmortgage.com](mailto:Tom.Buerger@cobaltmortgage.com) or call 425-830-8701. You may also visit the dog blog at <http://newporthillsdogowners.blogspot.com/>

### **Bellevue LifeSpring**



Did you know that 22% of Bellevue students' families are struggling with poverty and a total of 84 languages are spoken in our schools? Fortunately we live in a diverse community where many people embrace their neighbors, celebrate each other's cultures, offer support and share life experiences. South Bellevue has formed a new diverse circle, adding to the nine existing Bellevue LifeSpring circles throughout our city. The mission of BLS is to promote stability, self-sufficiency and independence for those in need in the Bellevue community through programs and services that feed, clothe, shelter, and educate. Please contact Lisa Viereck @ [lisav@windermere.com](mailto:lisav@windermere.com) if you are interested in joining the South Bellevue Circle. If want to volunteer in a different area or know someone who needs emergency assistance, contact <http://www.bellevuelifespring.org/index.php>

**Support our local merchants:** Newport Hills continues to offer an array of valuable goods and services in the shopping center area. A warm welcome to our newest merchant, **Dom & Nicks Gourmet Pizza** who is receiving great reviews for their delicious pizza. Call 425-679-6201 for pizza and pasta delivery! The survival of our shopping center depends on the support from all residents, so please give your business to our local merchants. Many of them sponsor and support our community events throughout the year.

**Be proactive with crime prevention:** Establish your block watch groups. For more information on crime prevention and email alerts please contact Detective Chinn, [RChinn@bellevuewa.gov](mailto:RChinn@bellevuewa.gov)

**NHCC Trustees:** Our area trustees are a very important component of the NHCC Board. If you are interested in learning more about the role of a trustee or want to become one, please read the definition in the newsletter or visit the NHCC website. Serving as an area trustee is a great way to engage with your community and stay informed by attending NHCC monthly meetings. In short, an area trustee is a conduit to disseminate information to and from their neighborhood.

**The Role of Trustee:** Article IV, Section 5. Trustees shall serve their respective Areas by attending General Membership meetings at least once per quarter, serve as a conduit of information from the Board of Directors to their assigned area and vice versa. Using the Board-approved template, trustees may collect email addresses and phone numbers of residents in their area and other NH residents known to the Trustee. This information will be used to keep the neighbors informed on issues of concern to the community and to encourage membership. They may also recruit "Block Captains" to help with these duties.

**Volunteer Appreciation:** Thank you to the many volunteers of Newport Hills who continue to contribute the quality of life in our community. I have included a special volunteer appreciation insert with photos which depicts some of the celebratory events we have enjoyed together: 4<sup>th</sup> of July Picnic, Membership Kickoff, Hawaiian Luau and Candidates Forum.

**New NHCC Leadership for 2012:** I am honored to announce your new NHCC executive BOD for 2012: Bruce Young/President, Kurt Springman/Vice President, Xu Li/Treasurer, with the position of secretary still open. I will serve as Past President in 2012. The area trustees compose the remainder of the Board of directors and are encouraged to attend monthly meetings. Bruce Young brings many years of Club experience, knowledge and good old heartfelt neighborliness to the leadership table. We are honored to have him back as President! Kurt Springman and his family are remarkable assets to the neighborhood and Kurt's knowledge and skill set will help take the Club to a whole new level with the City and School District. Xu Li has been assisting Treasurer Matt Camrud for more than six months and will do an excellent job. Contact Bruce Young if you are interested in serving one term as Secretary or encourage someone else who is may be a good fit. Remaining area trustee positions are open as well.

**NHCC Candidates Forum, October 11:** The NHCC hosted an organized and well attended City Council and School Board Candidates Forum at Lexus of Bellevue. Among the candidates were two of our Newport Hills residents who spoke on neighborhood issues. Congratulations Michelle Hilhorst and Patti Mann for stepping up to the Council campaign platform. Great job ladies! Kurt Springman, former council member and Newport Hills resident, served as moderator. Kurt asked excellent questions and invited all candidates to play a "map game" of Newport Hills. They were asked to draw an outline of the following boundaries on their maps: 1) Newport Hills neighborhood 2) The Bellevue School district boundary lines 3) The Valley Medical hospital District #1 boundary lines. This game heightened awareness surrounding the questionable school and hospital boundaries in Newport Hills. Thank you Kurt!

### **Zoning Updates in Newport Hills: November 16<sup>th</sup> Public Hearing**

At its October 17th meeting, the City Council initiated a process to amend the Land Use Code to provide better support for uses in some of the City's neighborhood shopping centers. The City will look at the NB (Neighborhood Business) zone and assess whether some of the existing size limitations should be adjusted. For example, currently retail uses are limited to 3,000 square feet. Making modest adjustments to some of these standards might help attract new tenants to vacant spaces at the Newport Hills Shopping Center and may improve the health and stability of other neighborhood business locations.

The City will be working with the community, especially the Northtowne, Bel-East, and Newport Hills neighborhoods, to review what changes to the Land Use Code might be appropriate. Draft concepts will be reviewed with the Planning Commission at a study session on November 16. A public hearing will be held once draft amendments have been prepared, possibly in December. The City Council will make the final decision on whether to adopt any amendments. For more information, please contact Paul Inghram at 425-452-4070 or Cheryl Kuhn, 425-452-4089.

### Newport Hills Neighborhood Park Planning

**Background:** In 2010 the City of Bellevue acquired property on Southeast 60th Street for a new neighborhood park in the Newport Hills area. The site was purchased with funding from the 2008 voter-approved Parks and Natural Areas Levy. While the levy provided funding for the property acquisition, no money was allocated for property improvements, and no development plans have been established.

**Resident Ideas Wanted!** The City and the Newport Hills Community Club have recently agreed to work together to develop a vision for the park. A timeline for plan completion has not been established however you can submit your park development ideas in the following survey: <https://www.surveymonkey.com/s/NewportHillsNeighborhoodParkPlanning>

**Update:** The City continues to work with NHCC and the greater Newport Hills neighborhood to develop a vision plan for this park. A panel of interested citizens, including NHCC Parks Committee members, will be assembled to help steer the process. This will likely begin in early 2012 and will include neighborhood meetings (open to the public) as a means for citizens to share their ideas for the property.

**Additional information:** For additional information and opportunities to become involved in the neighborhood park planning process, please **contact Brian Krause**, Parks and Community Services Planning, Design and Project Management for City of Bellevue 425-452-6992 or [BJKrause@Bellevuewa.gov](mailto:BJKrause@Bellevuewa.gov).

### Results of the NHCC October 18<sup>th</sup> election: 2012 Executive Board

|                                 |   |
|---------------------------------|---|
| Past President *Lisa Viereck    | President *Bruce Young  |
| Vice President, Kurt Springman  | Treasurer, Xu Li  |
| Secretary, <i>Position Open</i> | * Per the by-laws, the current Vice-President moves into the role of President and the President moves into the role of Past President (providing continuity and transfer of knowledge to the President). Also, per the by-Laws, the Vice-President, Secretary and Treasurer and Trustees are elected for one-year terms. |

### 2012 Trustees (contact Lisa Viereck for a Trustee's phone number)

|         |                                 |         |   |
|---------|---------------------------------|---------|---|
| Area 1  | Matt Camrud                     | Area 16 | <i>Position Open</i>                        |
| Area 2  | Shelly Zhou                     | Area 17 | <i>Position Open</i>                        |
| Area 3  | Regina Glenn                    | Area 18 | Xu Li (5)                                   |
| Area 4  | Debbie Margolis                 | Area 19 | Robert Parish (7)                           |
| Area 5  | Cheryl Nygaard                  | Area 20 | Kurt Springman (4)                          |
| Area 6  | Jason and Erin Leach (5)        | Area 21 | Jerry Olson (25)                            |
| Area 7  | Dorothy Bracken                 | Area 22 | <i>Position Open</i>                        |
| Area 8  | Bruce Young                     | Area 23 | <i>Position Open (Del Mar Woods)</i>        |
| Area 9  | Heidi Dean (5)                  | Area 24 | Jan and Lloyd Arneson                       |
| Area 10 | Nancy Reilly                    | Area 25 | Debra Haraldson / Jerry Olson               |
| Area 11 | Shawn Garner                    | Area 26 | <i>Position Open (Lake Lanes/Lakehurst)</i> |
| Area 12 | Lisa Viereck (Breckenridge)     | Area 27 | MaryAnn Yanni / Lisa Viereck                |
| Area 13 | Michelle Hilhorst (Grossnickle) | Area 28 | Tom Snellings                               |
| Area 14 | Debbie Worthy                   | Area 29 | <i>Position Open (Pembroke Meadows)</i>     |
| Area 15 | Reba Jones (9)                  |         |   |

### Welcome Xu Li ,2012 Treasurer

I currently serve as Assistant Treasure at Newport Hills Community Club. I am also an active volunteer at Newport Height Elementary School since I moved to the Newport Hills community with my husband and two sons in 2009. I have an advanced education background in Accounting. I am very impressed by the contributions and achievements the board and community members have made. I am willing to serve the Newport Hills Community in order to build a stronger community together.

### Welcome Kurt Springman, 2012 Vice-President

I am a recent resident of Newport Hills, moving to 125th Ave SE in May, from Newport Shores. Our family is very excited to live in Newport Hills. We have a number of friends in the neighborhood, and our children enjoy the pool. My daughter Sami has participated on the diving team for the past two years, and is looking forward to competing on the swim team this spring. I am a Bellevue native, and my wife Cathy and I have two daughters, Chelsea and Sami, who attend Newport High School and Tillicum Middle School, respectively.

Cathy and I have been very involved with the community. In the 1990's, I organized a South Bellevue Neighborhood Association and was successful in getting Lakemont Blvd built, as well as many safety and traffic improvements in the area. During the 90's I was very involved in the Bellevue Chamber of Commerce, and Cathy was active with the Newport Heights YMCA Pre-school, which both of our children attended. We both coached Newport and Boys & Girls Club soccer teams for 10 years, and Cathy has been a Girl Scout leader for the past 8 years.

I was elected to the Bellevue City Council in 1996, and served thru 2000. During my term on the council I was very involved with the City Budget and taxes, eliminating property tax increases for over 6 years. Other topics the Council dealt with in those years were Group Home zoning, Bell/Red traffic, Downtown Park, Lewis Creek Park, various master plan updates and neighborhood zoning changes, and partner programs with the School District.

Our children attended the Spanish Immersion program at Puesta del Sol, and Cathy was the PTA chair for two years, leading the transition from a mixed program school to 100% Spanish Immersion program and doubling capacity. She also helped save the district-wide bus program, and chaired a number of fundraising campaigns. In 2003 we moved to Newport Shores, where we were involved with the Homeowners Association, chaired the 4th of July event, various holiday events and the swim team. I was the swim meet announcer for the past 4 seasons, and served on the Association's Board of Directors.

### 2012 Committee Chairpersons \*\*

|  |   |
|--|---|
| <b>Standing Committees:</b>                    |   |
| Newsletter Editor                              | Open  |
| Land Use and Community Appearance              | Kurt Springman and Lisa Viereck                             |
| Membership                                     | Robin Bentley   |
| Merchants' Liaison                             | Michelle Hilhorst   |
| Public Safety                                  | Jason Leach and Dorothy Bracken                             |
| Youth Activities:                              | Santa Tour, Michelle Hilhorst, Spring Egg Hunt, Shelly Zhou |
| Community Outreach: Fourth of July Picnic      | Lisa Viereck and Bruce Young                                |
| Volunteer Appreciation                         | Denise Dice   |
| Website  | Debra Haraldson   |
| Government Liaison                             | Open  |
| Audit  | As Needed   |
| Nominating                                     | Bruce Young   |
| <b>Special Committees:</b>                     |   |
| New Park located on SE 60 <sup>th</sup> Street | Robert Parish   |
| Holiday Bazaar                                 | Michelle Hilhorst and Shelly Zhou                           |
| Shopping Center                                | Michelle Hilhorst   |

\*\* Note: Committee Chairs are not elected positions. Per the by-laws chairs are appointed by the NHCC President

## NHCC Holiday Bazaar!

*Michelle Hilhorst, Holiday Bazaar Chair*

Plan to attend the third annual Holiday Bazaar at our local shopping center on Saturday December 3rd from 8am-4pm. Santa will be on hand for photo and visits between 10am - 12pm! This will be your only opportunity to see Santa this year as he won't be receiving visitors after the Santa Tour on December 17.

Please come support your local merchants and check off those on your Holiday list. Stay for lunch at one of our local restaurants and send off your gifts at our shipping center. You may drop off non perishable food for our local food bank.

If you would like to be a merchant at the bazaar, please contact Michelle Hilhorst at [santa@newporthillscommunityclub.org](mailto:santa@newporthillscommunityclub.org).

### Here comes Santa Claus, Here comes Santa Claus Driving through Newport Hills! December 17



- Santa will be starting his tour at 9am at Fire Station #9 on Newcastle Way and wind through Newport Hills and Lake Heights with candy canes and oranges. Don't miss creating memories of Santa in your neighborhood! To view Santa's route, visit the website:

[www.newporthillscommunityclub.org](http://www.newporthillscommunityclub.org) and click on Santa Tour on the right hand side of the page. The map is also included in this newsletter.

Santa & his Elves will be collecting non-perishable food along the way. Please donate as the food will help local families who just need help to make through the Holidays. These are the gifts Santa loves most!

### Tyler Property Park Update

At the October NHCC meeting, NH resident Robert Parish and Brian Krause with Bellevue Parks & Community Services gave an update on the process and how the NHCC Park Committee has been working with the Parks & Community Services to gather ideas for the park. The next steps for the NHCC Park Committee are:

- Review NHCC Park Committee applications of new members for nomination for the NHCC Board
- Review the results of the survey.
- Develop three to five visions for the park.

Visit the website at: [www.newporthillscommunityclub.org](http://www.newporthillscommunityclub.org)

- Present the visions to the neighborhood for input and comments.
- Incorporate comments and present three visions to the Bellevue Parks Department for approval of one vision.
- Present the vision to the Bellevue City Council with support from the Parks Department.

To voice your ideas and/or apply to join the NHCC Parks Committee please visit:

<https://www.surveymonkey.com/s/NewportHillsNeighborhoodParkPlanning>

Or contact Robert Parish: [brit\\_rob007@yahoo.com](mailto:brit_rob007@yahoo.com) or 425-641-7011.

### Serving on the Board of Directors

*Debra Haraldson, Secretary*

After serving almost four years as Secretary on the Board of the NH Community Club, I am stepping down. If you want to serve for the next year – or more – I can make the transition easy for you. I will meet with you to show you the ropes. It's best if you have some experience taking minutes, and that you know Microsoft Word well. Not only will you take minutes, you are responsible for, with Board and Club approval, updating the by-laws and Board Handbook. The Executive Board meets a few days prior to each monthly membership meeting so you will need to be available for these meetings. After taking the minutes from the membership meetings, you send a draft to the other board members for comment. Once approved, you send a pdf version to the Webmaster for posting. If you are interested in serving, contact the Nominating Chair, Bruce Young at [bruceandvikki@comcast.net](mailto:bruceandvikki@comcast.net).



Residential • Commercial

### Rezscapes

Landscape Services and Maintenance  
Seasonal Cleanups, Pruning, Lawn Care  
[www.rezscapes.com](http://www.rezscapes.com)

**Ken Resnik**  
425.746.1818

Licensed/Bonded  
Cell: 425.503.9244

SERVING THE EASTSIDE SINCE 1980

**DAVE'S PAINTING, INC.**  
Interior & Exterior  
State Contractors #DAVESPIO23NQ

Dave Lovell  
425-802-1874

11811 SE 58<sup>th</sup> St.  
Bellevue, WA 98006

[davespaintinginc@comcast.net](mailto:davespaintinginc@comcast.net)

### DR. ROD NORDBERG

### Newport Hills Orthodontist

**Dr. Rod Nordberg** invites you to come in for a free exam. Our friendly staff welcomes adults and kids age 7 and older.



**Specialist in Invisalign.**

**Call 425-641-3451**

or visit our web page at [www.gloriousgrins.com](http://www.gloriousgrins.com)

**Advertising in the Quarterly Newsletter**  
If you want to purchase an ad in the next newsletter, email [newsletter@newporthillscommunityclub.org](mailto:newsletter@newporthillscommunityclub.org)

### Treasurer's Report

*Matt Camrud*

Since the beginning of our fiscal year on April 1, 2011, here how the numbers look through the end of October:

| <u>Income</u>        |         | <u>Assets</u>  |         |
|----------------------|---------|--|---------|
| Dues:                | \$5,090 | B of A CD:   | \$3,651 |
| Donations and Other: | \$4,060 | B of A Savings:  | \$2,000 |
| Newsletter Ads:      | \$2,280 | B of A Checking:   | \$5,563 |
| <br><u>Expenses</u>  |         |  |         |
| Events:              | \$3,580 | <p>I'd like to welcome Xu Li to the NHCC Board. Xu was recently elected as Treasurer, effective January 1, 2012. Xu has been assisting me for more than 6 months and will do an excellent job.</p> <p>Thanks to the membership for the opportunity to serve as your Treasurer for the last three years, and thanks for your support of NHCC!</p> |         |
| Newsletter:          | \$3,248 |  |         |
| Liability Insurance: | \$1,775 |  |         |
| Operational:         | \$191   |  |         |



## The VP Report

*Bruce Young*

Greetings fellow Newport Hills Neighbors. We just completed our election of Officers and Trustees for 2012 at our October General Membership meeting. On the Board we have: Lisa Viereck, Past-President; Kurt Springman, Vice-President; and Xu (Sue) Li, Treasurer, and myself as President. We still need a Secretary; my wife Vikki has agreed to temporarily take that position. She has MS and may not be able to attend every meeting, but we welcome her desire to contribute.

We have a nearly full slate of trustee and I think we will start out the year fairly well with a good group and I encourage all trustees to attend the monthly meetings to get information that they may pass on to the residents within their assigned areas.

I also invite the entire community to come to the meetings that will continue to be held on the third Tuesday of the month at 7:00pm in the Newport Hills Community Church Sanctuary. An interesting conversation occurred a few months ago between my wife and I. I asked Vikki a why she didn't come into the NHCC meeting after her Ladies' Bible study ended. She said she didn't know that she was invited. I said, "uh oh", if Vikki didn't know she could attend, I wonder how the rest of the community feels. All residents are invited so don't be shy!

Lisa Viereck's theme for 2011 was: "Building Better Neighborhoods One Household/Membership and Partnership at a Time". My theme for 2012 will be: "Building Community in Newport Hills through our NHCC Mission Statement." Our Mission Statement has evolved slightly over time but essentially remains the same simple and concise statement that we have today as posted in the masthead of this newsletter.

The NHCC is well regarded. We partner well and our outreach committees are active. So my priority this year is to focus on reformulating and updating our internal infrastructure regarding communication of our goals

and visions to the membership. The NHCC has been doing new things for several years now and it is time to address our communications options and the roles of our Trustees.

The paradigm has changed but the focus has not – "The Journey Is (still) The Destination". Trustees used to deliver newsletters and collect membership dues. Newsletters are mailed to all residents and businesses, and we have several ways of paying dues. So what is the role of a Trustee now? Trustees should be engaged in and excited about the organization, promote the club to everyone, especially the residents in their area, and be well-informed. They should disseminate accurate information that represents the official position of the club and that aligns with our mission statement and goals so as to not adversely affect the reputation of the NHCC, or the relations with our partners and members.

The NHCC has a handbook and a 2006 revision to the by-laws includes it as a maintained document of the NHCC. It will include an updated definition of our Trustees. I will gather a focus group to brainstorm ways to integrate the evolving trustee roles under the objective of community building. Note that Article III of our Articles of Incorporation states, "The purpose of this corporation shall be the organization and operation of a community club for the pleasure and recreation, social and civic improvement, and other non-profitable purposes of the residents of Newport Hills." This statement should apply to all the board members, so it seems prudent to coordinate the Trustees' activities within a communications committee. Perhaps a communications committee will be ad hoc for a time and once the Trustees are fully engaged we dismiss it. Or maybe the communications committee becomes the focus for providing social and civic improvement to Newport Hills, one area, or one block, at a time.

If you are a trustee and want to throw a block party to socialize with your neighbors, do it. If you are a trustee and want to organize a Block Watch or a Map Your Neighborhood program, do it. Share your successes and challenges with the board members and other Trustees, or write about it on the blog. If a trustee wants to use the board approved template for collecting emails they should do it. The webmaster will add the email addresses into the NHCC's email distribution list. Thank you for participating.

See you around the neighborhood!



**Newport Hills**  
**Chevron is here to serve you!**

- 24 hour gas service
- Auto Repair
- Propane refill
- Food mart

5804 119<sup>th</sup> Avenue SE  
 425-747-6991

Family owned and a loyal Newport Hills business for 43 years.

**A Message From Our City of Bellevue Liaison**

I will be on maternity leave starting early November. While I am out, you can call 425-452-6836 or email the Neighborhood Outreach Team [neighborhoodoutreach@bellevuewa.gov](mailto:neighborhoodoutreach@bellevuewa.gov) if you need assistance with neighborhood issues. One of our team members will be happy to help you.

I am looking forward to working with you again once I come back next year. Have a great holiday season and please keep in touch!

Ying Carlson  
 Community Relations Coordinator  
 Neighborhood Outreach  
 Department of Planning & Community Development  
 City of Bellevue



**WHERE TRUE SPORTS FANS MEET!**  
 Now Open at 9am Sundays!

Sunday After Church Special  
 \$3.00 off Any Breakfast item over \$6.99  
 Valid Sundays only  
 One coupon per customer  
 Coupons may not be combined with any other offer. Dine in only

**PUB HOURS**  
 10:30am – 2am Mon-Sat  
 9am – midnight Sun

Washington's Lottery  
 Pool, Darts, Pull Tabs, Cocktails  
 Food To Go  
 23 TVs and Satellite Sports!  
 Kegs to Go!  
 Banquet & Catering Services  
 New Menu Items

**KITCHEN HOURS**  
 10:30 am – 10pm Mon-Sat  
 9am-10pm Sun  
 Limited menu available until midnight  
 Children welcome until 9PM  
 New Kids Menu

Visit us at:  
<http://mustardseedgrill.com/>  
 and on Facebook  
 5608 119th Avenue SE NEWPORT HILLS  
 Proud sponsor of NHCC 4<sup>th</sup> of July Picnic & Parade  
 425-603-9001

*Experience the Sweet Life at...*



- Hair Services for the Entire Family
- CHI Hair Smoothing Treatment
- Complete Nail Services - Including Nail Design
- SHELLAC Manicure
- Feathers, Tinsel & Clip-in Hair Extensions
- Special Occasion Services Available
- Gift Certificates Available
- Walk-ins Welcome

VISIT OUR WEBSITE AND FACEBOOK FOR MONTHLY SPECIALS  
 WWW.DOLCEVITASALONANDNAILSPA.COM  
 WWW.FACEBOOK.COM/DVSALONANDNAILSPA



**425.64 | .03 | 10**

12018 SE 60<sup>th</sup> STREET - BELLEVUE, WA 98006

**Maximize**  
**Your Return--**  
*Rely on a Tax*  
*Professional*



425/747.7797 phone  
 425/747.6775 fax



*Nancy C. Reilly, EA*  
*Enrolled Agent*  
*nancy@NCRaccounting.com*

6516 129th Avenue SE  
 Bellevue, WA 98006  
[www.NCRaccounting.com](http://www.NCRaccounting.com)



BBB Accredited  
 with an A+ rating

This firm isn't just another tax preparation firm.  
 We are proud to be Enrolled Agents (EAs), a  
 prestigious designation from the Internal  
 Revenue Service

## All About Hair Salon

(425) 746 - 8755

### Special Invitation

- \$9.99 Haircut
- 30 %OFF Foils
- 30 % OFF Hair Color
- 50% OFF All Waxing
- Limited Time Only

### King Combo

- \* Haircut
- \* Scalp Massage
- \* Express Facial

**\$29<sup>99</sup>**

Please call ahead for faster service.

Haircut - Hair Color - Foils - Waxing  
 Facial - Hair Feather Extions .

Thank you for supporting us.

[VoAllAboutHair.com](http://VoAllAboutHair.com)

[FaceBook.com/AllAboutHairSalon](https://www.facebook.com/AllAboutHairSalon)

5820 119th ave se. Bellevue. WA 98006



**Dom & Nicks**  
 Gourmet Pizza

**Open for Lunch and Dinner, 10-10**  
 Dom & Nicks Gourmet Pizza & Italian Cuisine  
 FREE Pizza Delivery  
 5625 119<sup>th</sup> Ave SE  
[dom-nicks@hotmail.com](mailto:dom-nicks@hotmail.com)  
 425-679-6201

### The Pet Stops Here, Where Pets Go for Fun!

Did You Know?

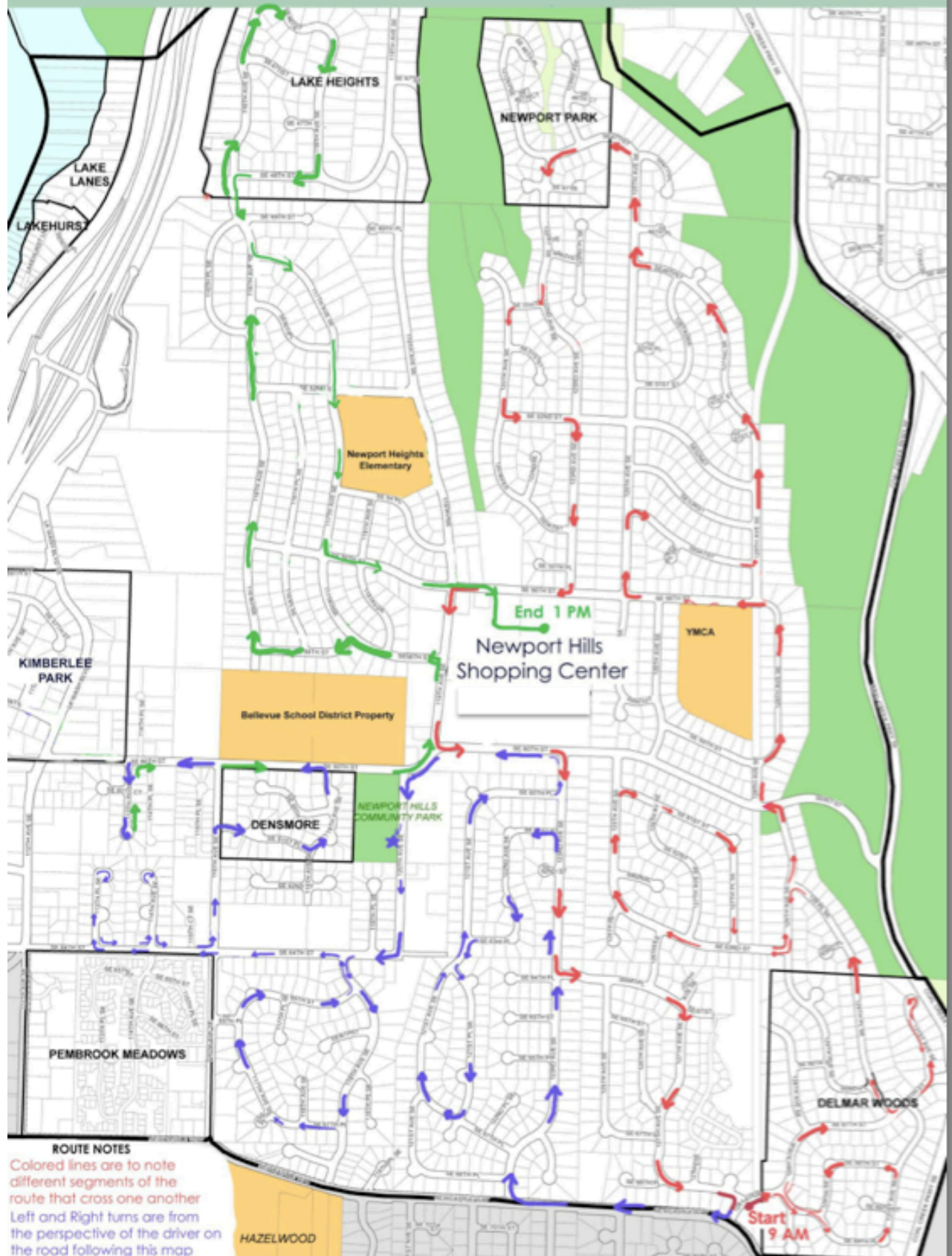
Full Service Grooming Salon, Expanded Retail Selection  
 We now offer Daycare and Boarding

Join us for our Holiday Open House Saturday, December 3.  
 We will host a professional pet photographer, provide  
 treats, and offer specials.

10697 Main Street Bellevue, Washington 98004  
[www.petstopshere.com](http://www.petstopshere.com)  
 425-637-0188



# Newport Hills Community Club Santa Claus Tour Route Map

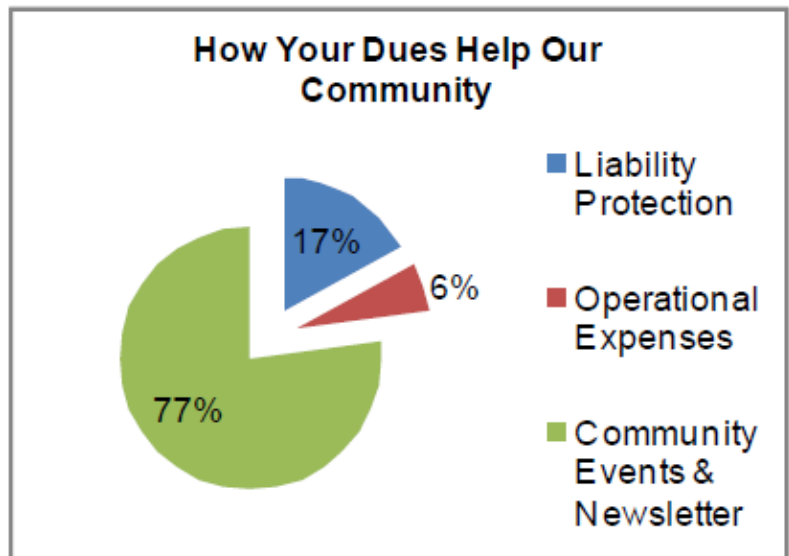


# NHCC Membership Drive

We need your help keeping Newport Hills a vital community! Your dues & donations: fund NHCC operations; fund the newsletter; sponsor the Spring Egg Hunt, the Santa Tour and the 4th of July Picnic; and, promote (by partnering and supporting) local events and activities that encourage a sense of community in Newport Hills.

For your convenience we have 3 simple ways to join:

- **Be traditional**—mail in your dues with the completed form below.
- **Save a stamp**—drop off your dues with the completed form in an envelope at the Newport Hills Mailboxes and Shipping Center.
- **Use PayPal** - Visit our website: [www.newporthillscommunityclub.org](http://www.newporthillscommunityclub.org)



## Frequently Asked Questions

**Q: When does the membership year begin and end?** The club's fiscal & membership year runs from April 1st to March 31st the following year.

**Q: Are my dues and donations tax deductible?** No. Our dues are voluntary & while we do accept donations, we are not a charitable organization (we are registered with the state and the IRS as a Neighborhood Association).

**Q: Will my information be sold?** No! Rest assured, your information will never be sold, auctioned, given or traded.



---

## Newport Hills Community Club Membership Form

Name: \_\_\_\_\_

Address: \_\_\_\_\_

Email address: \_\_\_\_\_ Phone: \_\_\_\_\_

*You will receive a confirmation email that needs a reply to add your email to our announcement list. Your email address will not be given to other individuals or organizations.*

Included is my Voluntary Membership Dues amount of **\$10.00** as well as an additional donation of \$ \_\_\_\_\_ to provide additional support of our club operations, community events and youth activities.

**Mail to: Newport Hills Community Club, 5806A 119th Ave SE, PMB #222, Bellevue, WA 98006**

Yes, I would like to volunteer for/as: \_\_\_\_\_

# TRILLION INSPECTIONS

Jim Breckenridge

206-650-7009

WA STATE LICENSED HOME INSPECTOR

ASHI CERTIFIED LICENSE #201994

Digital/Photo Reports ASHI/Pest Certified

Same-day Service Prompt & Professional

Over 18 years of experience!

Email: jim@trillioninspections.com



[www.Trillioninspections.com](http://www.Trillioninspections.com)



Lisa Viereck

Licensed Broker

Direct: 206.852.2289

[lisav@windermere.com](mailto:lisav@windermere.com)

[www.lisav4homes.com](http://www.lisav4homes.com)

## Five Star Award Winner in Client Satisfaction 2011 Seattle Magazine

- ◆ Newport Hills Real Estate Market Specialist
- ◆ 2010 NHCC VP & BOD
- ◆ 2011 NHCC President & 2012 Past President
- ◆ 2009-2011 July 4 Chair/Co-Chair
- ◆ Home Prep and Staging Specialist
- ◆ Certified Negotiation Expert, CNE
- ◆ Seniors Real Estate Specialist, SRES
- ◆ Newport Hills Resident & Community Advocate



Windermere Real Estate/East, Inc.  
14405 SE 36th Street - Suite 100 | Bellevue, WA 98006  
Phone: 425.643.5500

Your LOCAL contractor.

Call us today!



We are located in Newport Hills  
(425) 643-9095

FREE in-home consultation!

[www.stevekunkelmasterbuilders.com](http://www.stevekunkelmasterbuilders.com)

## Support your neighborhood swim and tennis club



Trial Memberships Available – Only \$200 for usage through December 31<sup>st</sup>. Our winter programs include Swim Lessons, Dive Lessons, Swim Team, Masters, Aquacise, Monthly Parent's Night Out, Private Pool Parties Saturday Nights.

Our Winter use facilities include the 25-Meter 6-lane Pool, Hot Tub, Sauna, Weight Room, Club House, Outdoor Tennis, and Banquet Room.

Club Hours are 6 AM – 9 PM Monday – Friday, 8 AM – 9 PM Saturday and Noon – 9 PM Sunday.

Newport Hills Swim & Tennis Club – Your Community Swim and Tennis Club (a non-profit organization)

5464 119<sup>th</sup> Avenue SE – Bellevue - 425-746-9510

[www.nhstc.com](http://www.nhstc.com) or follow us on Facebook.



**Mark Your Calendar!**

All Newport Hills residents are encouraged to become an active member by supporting the Club through annual dues of \$10, participating in community events, and attending meetings.

- November 15 NHCC Membership Meeting
- December 3 Holiday Bazaar
- December 17 Santa Tour
- December 20 NHCC Membership Meeting
- December 28 Winter Dog Greet and Ice Skating Party, Downtown Park, 9am-noon. Free event with all donations benefiting Bellevue LifeSpring. Contact Lisa Viereck for more information: lisav@windermere.com

Keep up-to-date on community events, park and public art projects, and issues that need your attention by visiting Facebook or the NHCC blog – see the address at the bottom of the page. Use the blog to voice your opinions or to begin a discussion on issues that concern you.



**Community Phone Numbers**

|  |  |  |
|--|--|--|
| Police & Fire Emergency: 911   | Chamber of Commerce: 425.454.2464  | Waste Management: 800-592-9995                 |
| Police Non Emergency: 425-577-5656   | City Clerk: 425-452-6466   | City Utilities: 425-452-6932                   |
| Fire Non Emergency: 425-452-6892   | Comcast: 800-777-1559  | Bellevue Library: 425-450-1765                 |
| Block Watch Info: 425-452-6915   | Puget Sound Energy: 800-321-4123   | Underground Utilities Location: 1-800-424-5555 |
| Factoria Transfer Station<br>13800 SE 32nd Street<br>800-325-6165 ext. 64466 | Renton Transfer Station<br>3021 NE 4th Street<br>800-325-6165 ext. 64466 |  |

# *Newport Hills Community Club*

*Winter 2011 Newsletter*

---

5806A 119th Ave SE  
PMB #222  
Bellevue WA 98006