

Newport Hills Community Club

Winter 2010 Newsletter



Mission and Objectives

The Newport Hills Community Club (NHCC) is a volunteer neighborhood organization that serves its membership by:

- disseminating news and information via the web and newsletter;
- supporting and participating in community improvements
- acting as a forum for issues of importance to the neighborhood
- promoting regular social events throughout the year

Since the Club's inception in 1969, it relies on volunteers to accomplish its Mission and Objectives. Join the Board of Directors and your neighbors at the General Membership Meetings in March and October and at Board meetings on the third Tuesday of each month. All meetings are held at 7:00pm at the Newport Hills Community Church, 5833 119th Avenue SE.

Membership dues are voluntary and are \$10.00 per year. (*Note: Dues are not tax deductible because the Club is a neighborhood association.*) The Club's mailing address is 5806A 119th Ave SE, PMB #222, Bellevue WA 98006.

Community Events

All Newport Hills residents are encouraged to become an active member by supporting the Club through annual dues of \$10, participating in community events, and attending meetings.

NH Shopping Center Update	December 14 (visit http://www.newporthillscommunityclub.org/blog/?paged=2 for info on Phase I of this project)
Santa Tour and Holiday Bazaar	December 18
Board/Membership Meetings	December 21, January 19, February 15
Women's Self Defense Class	January 22

Keep up-to-date on community events, park and public art projects, and issues that need your attention by using Facebook or the NHCC blog – see the address at the bottom of the page. Use the blog to voice your opinions or to begin a discussion on issues that concern you.



The President's Message

Michelle Hilhorst

Dear Neighbors:

It's that time of year again--the holiday rush is on and many of us are saying "Where did the year go?" It sure did fly by, and I am incredibly proud of all the things Newport Hills and the Club accomplished this year. At this writing, the new soccer turf field will be open, with games to begin in January. Soccer fans will be visiting Newport Hills for the first time, and will return when they discover the wonderful resources the community has to offer!

Due to our stewardship planting, beautiful plants and trees will mature at the mini-park and SE 60th trailhead sign, to be enjoyed for many years to come. We successfully hosted an inaugural Community Faire, cleaned out our homes with a community garage sale and donations. We generously donated food for our neighbors in need through various events throughout the year. By year end, we will have a better idea of what our retail center may look like. To close out a wonderful year with a bang, we welcome the Second Annual Holiday Bazaar and a visit from the jolliest of souls, Santa Claus.

I am proud and honored to have served as your NHCC President this year. I have received so much from Newport Hills: our home, incredible neighbors, a next-door grandma, various forms of childcare, friends for our children, amazing friends for ourselves, beautiful surroundings in which to live, close to home resources and finally, a wonderful sense of community that makes my family love to call Newport Hills home. I hope I have been able to reciprocate well for what I have received! I also hope this year has helped make others feel that same way about this wonderful community. It takes all of us, and thank you to all of you who volunteered and supported the Club and spirit of community here in 2010.

Many wonderful wishes for a healthy happy holiday season and in 2011!

**Here comes Santa Claus, Here comes Santa Claus
Driving through Newport Hills! December 18**



Santa has confirmed a “fly by” and will be led through the streets by a Bellevue Fire Truck! Santa will be starting his tour at 9am at the Fire Station #9 on Newcastle Way and wind through Newport Hills & Lake Heights with candy canes and oranges. His sleigh will land at the Holiday Bazaar in the Newport Hills Shopping Center

approximately 1:00pm. He will need to head back to the North Pole at 2:00pm, so don't miss your chance to see him. Parents – bring your camera for a free photo opportunity. Don't miss the memory of when Santa came to your neighborhood! To view Santa's route, visit the website:

www.newporthillscommunityclub.org and click on Santa Tour on the right hand side of the page. The map is also included in this newsletter.

Santa & his Elves will be collecting non-perishable food along the way. Please donate as the food will help local families in Newport Hills who just need help to make to through the Holidays. These are the gifts Santa loves most!

Holiday Bazaar

Saturday, December 18th in the former drugstore space at the Newport Hills Shopping Center, 10:00am-4:00pm

Find local treasures at the Second Annual Newport Hills Holiday Bazaar!

Need to find that unique gift, something for someone who has everything, last minute stocking stuffers, treats to sustain you while shopping or to serve your guests? It's all here! This is a fabulous opportunity to shop locally and mingle with your neighbors during the Holiday Season.



Make a day of it. Have lunch at Mustard Seed, Perry Ko's, Teriyaki Town, Herfy's, or grab a pizza to go at Sahara's. Ship your gifts at Newport Hills Mailboxes. Drop off your clothes for cleaning and pressing at Aloha Dry Cleaner. Pamper yourself at Newport Hills Nails, All About Hair, or Hair Media.

Psst...Santa will be stopping by to do some shopping as well. Don't miss it!

Can You Help?

We need volunteers for the Holiday Bazaar and the Santa Tour. Students can earn Community Service Hours. Contact Santa@newporthillscommunityclub.org if you are interested.

GROOVE CONSTRUCTION
Built on Integrity

Robert Sharkey
Owner

5634 116th PL SE Bellevue, WA
Phone 425-647-1573
Fax 425-590-9819
groove@comcast.net

NORDBERG

Dr. Rod Nordberg

Orthodontist for Children and Adults

**Newport Hills Professional Center
5613 119th Ave S.E. Bellevue, WA. 98006**

Phone: 425-641-3451

Fax: 425-641-3879

Women's Self Defense Class

Saturday, January 22, 10-11:30am, Lee's Martial Arts, NH Shopping Center
Bring \$10, water bottle, towel and wear comfortable clothes

Lee's Martial Arts invites twenty-four women ages 14 and up to learn practical and effective self defense techniques. This 90-minute class will cover simple moves for freeing oneself from an attacker. To enroll, contact Michelle Hilhorst at President@NewportHillsCommunityClub.org or call 425-430-1976.

Advertising in the Quarterly Newsletter

If you want to purchase an ad in the next newsletter, email newsletter@newporthillscommunityclub.org

**From the City of Bellevue
Newport Hills Park – Stay Updated**

The City of Bellevue is posting pictures and comments as the park is renovated. The url is:
<http://www.flickr.com/photos/bellevuewashington/sets/72157624154285773/detail/>



Newport Hills
Chevron is here to serve you!

- 24 hour gas service
- Auto Repair
- Propane refill
- Food mart

5804 119th Avenue SE
425-747-6991

Family owned and a loyal Newport Hills business for 43 years.

TRILLION INSPECTIONS

Jim Breckenridge
206-650-7009

WA STATE LICENSED HOME INSPECTOR

ASHI CERTIFIED LICENSE #201994
Digital/Photo Reports ASHI/Pest Certified
Same-day Service Prompt & Professional

Over 18 years of experience!

Email: jim@trillioninspections.com



www.Trillioninspections.com

Visit the website at: www.newporthillscommunityclub.org

Sandi Tampa

Windermere Real Estate/ East Inc

Quote from a recent client:

“As we look back on our experience with selling and buying a home, we realize how fortunate we are to have Sandi as our agent. From the very beginning stages to even this day, she has helped us in so many ways. Sandi and her team of experts helped the home we were selling look spectacular.”



—Will & Bryce

Managing Broker, ABR, CNE, CRS, Realtor®
425.445.8863 | www.sanditampa.com

Treasurer's Report

Matt Camrud

Since the beginning of our fiscal year on April 1, 2010, here how the numbers look through the end of October:

Income

Dues: \$6,169
Donations: \$4,609
Advertising: \$580



Expenses

Events: \$3,095
Newsletter: \$2,695
Liability Insurance: \$1,665
Operational: \$178

We appreciate your continued support!

Public Art Project Update

The final phase of design review for the public art project near the Newport Hills Shopping Center will take place in mid to late November. Look for more details on the website at that time



40 Lake Bellevue, Suite 100, Bellevue

Mike and Kris Shore

425-644-4747

Your Newport Hill's Professional Real Estate Agents for the past 20 years.

When integrity matters, call us!
TheShoreTeam@comcast.net

Below is the new definition of a Trustee as voted on by the membership on October 19.

Trustees shall serve their respective Areas by attending General Membership meetings at least once per quarter, serve as a conduit of information from the Board of Directors to their assigned area and vice versa. Using the Board-approved template, trustees may collect email addresses and phone numbers of residents in their area and other NH residents known to the Trustee. This information will be used to keep the neighbors informed on issues of concern to the community and to encourage membership.

Below is the text as it appeared prior to the update.

Trustees shall serve their respective Areas by Trustees shall serve their respective Areas by maintaining communications between the Club and neighbors in their respective Areas, assisting with the annual membership drive and attending at least one General Membership meeting each quarter. They may also recruit "Block Captains" to help with these duties.



NOW SELLING KEGS TO GO!

BUY 1 BURGER
GET A 2ND FOR 1/2 PRICE
DINE IN ONLY, AFTER 5PM

WHERE TRUE SPORTS FANS MEET!

Washington's Lottery
Pool, Darts, Pull Tabs, Cocktails
Food To Go
23 TVs and Satellite Sports!

CHILDREN WELCOME UNTIL 9PM

PUB HOURS
10:30 am – 2:00 am Daily

KITCHEN HOURS
10:30 am – 10:00pm Daily
Limited menu available until 1:30 am

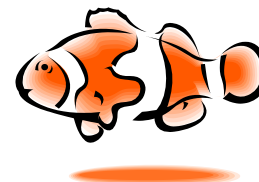
Visit us at:
<http://mustardseedgrill.com/>
and on Facebook

5608 119th Avenue SE NEWPORT HILLS
425-603-9001

Starting today you can swim with the big fish.

Newport Hills is offering some great programs this winter so come on in and join in the fun!

- Swim Lessons
- Swim Team
- Aquarobic
- Fitness Classes
- Yoga
- Parent Night Out
- Private Pool Parties
- Youth Water Polo
- Diving classes
- Friday Float Nights



Call us about our Banquet Room and reserve now for the Holiday Season!

Newport Hills Swim & Tennis Club
5464 119th Avenue SE – Bellevue
425-746-9510
www.nhstc.com

Newport Hills Ice Skating & Community Event!!



Bellevue Downtown Park
10201 NE 4th St.
Bellevue, WA 98004
(South of Bellevue Square Mall)

Mention you are with **"Newport Hills Community Club"** at the admissions counter and \$3 will be donated to the NHCC for each paid rink admission during the dates listed below.

Newport Hills Community Club Skate DATES & TIMES

Tue, Nov 30, 3~7pm	Tue, Dec 14, 3~7pm
Wed, Dec 1, 1~9pm	Thu, Dec 16, 3~9pm
Thu, Dec 2, 3~9pm	Tue, Jan 4, 3~7pm
Tue, Dec 7, 3~7pm	Wed, Jan 5, 1~9pm
Wed, Dec 8, 1~9pm	Thu, Jan 6, 3~9pm
Thu, Dec 9, 3~9pm	

Want to Learn How to Ice Skate?

Group/private lessons available from
PSA figure skating professional
Lisa Viereck

CFSA Gold Test Medalist & 28+ years
Recreational/Competitive Coaching Experience.

**Lace up your skates and &
have some holiday FUN on the ice!**

Admission information visit **magicseason.com**
Contact Lisa Viereck for Ice skating lessons:
lisaviereck@gmail.com or 206-852-2289

Exciting Membership News!

Sandi Tampa

We have exceeded our 2010 membership goal of 600 members! Thanks to all who have joined. Your support and participation help make our neighbor great.

Additionally, we are pleased to announce Robin Bentley will be our 2011 Membership Chair. Robin is a seventeen-year Newport Hills and current Lake Heights resident who has been very active with the club during the last two years. Robin will replace me, your Membership Chair for the last five years. Join me in thanking and welcoming Robin to this important role.

P.S. I'm not leaving the community – you'll still see me at all major Newport Hills events!

Residential • Commercial



Rezscapes

Landscape Services and Maintenance
Seasonal Cleanups, Pruning, Lawn Care

Ken Resnik
425.746.1818

Licensed/Bonded
Cell: 425.503.9244

SERVING THE EASTSIDE SINCE 1980

Executive Board and Volunteer Chairs

The Club is composed of volunteers and it needs you! Below is a list of staffed and unstaffed positions. If you are interested in volunteering, please contact president@newporthillscommunityclub.org or vicepresident@newporthillscommunityclub.org

President, Michelle Hilhorst, 430-1976
Vice President, Lisa Viereck, 852-2289
Past President, Cheryl Nygaard, 401-5126
Treasurer, Matt Camrud,
Secretary, Debra Haraldson, 644-4673
NH Community Church, Rev. Paul Burnham, 746-8034
Newsletter, Debra Haraldson, 644-4673
Web Designer, Grace Whiteaker, 562-3096
Volunteer Appreciation, Denise Dice
Santa Tour, Michelle Hilhorst, 430-1976
Spring Egg Hunt, Julie Tsai, 350-4678

Bellevue Liaison, Rich Dolleman, 452-2879
Fourth of July Picnic, Lisa Viereck, 852-2289
Holiday Lights, Steve Walker, 644-9601
Membership, Sandi Tampa, 445-8863

Volunteers Needed

Assistant Secretary
Assistant Treasurer
Assistant Web Designer
Public Safety Chair
Trustees for areas 2, 7, 15, 16, 18, 19, 20, 23, 24, 26, 28 & 29

(206) 465-3105
www.cherylnyaard.com
cheryl@windermere.com
Windermere REAL ESTATE
Cheryl NYGAARD
YOUR NEIGHBORHOOD REALTOR

Group Health Ice Arena

brought to you by Bank of America



Newport Hills Community Club Holiday Ice Skating & Community Event



Mention you are with
“Newport Hills Community Club”
at the admissions counter and
\$3 will be donated to the NHCC for
each paid rink admission during the
dates listed below.

NHCC Skate DATES & TIMES

Tue, Nov 30, 3~7pm
Wed, Dec 1, 1~9pm
Thu, Dec 2, 3~9pm

Tue, Dec 7, 3~7pm
Wed, Dec 8, 1~9pm
Thu, Dec 9, 3~9pm

Tue, Dec 14, 3~7pm
Thu, Dec 16, 3~9pm

Tue, Jan 4, 3~7pm
Wed, Jan 5, 1~9pm
Thu, Jan 6, 3~9pm

magicseason.com

Bellevue Downtown Park
10201 NE 4th St.
Bellevue, WA 98004
(South of Bellevue Square Mall)

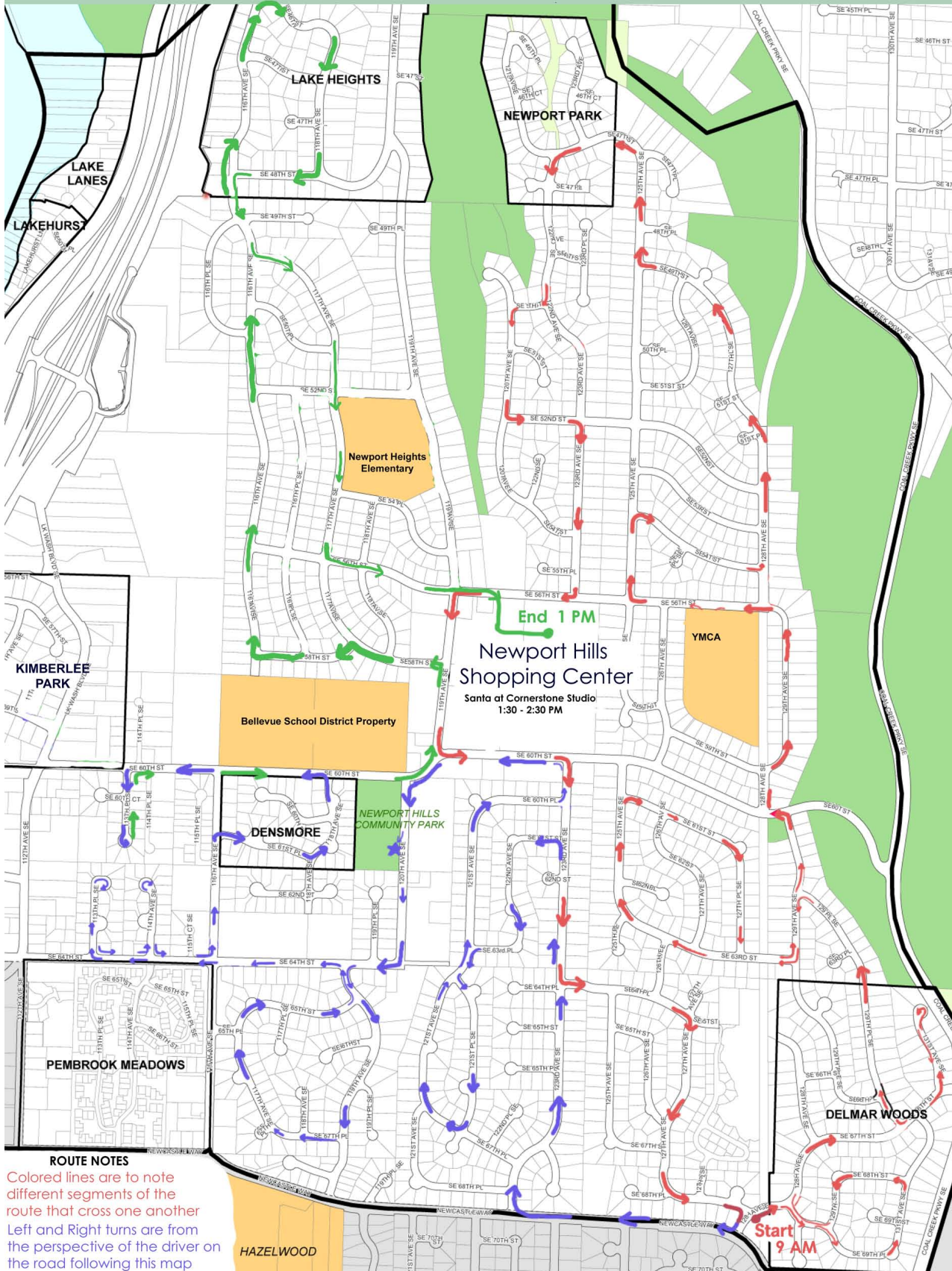
Admission: \$10 (Includes Skate Rental)

Want to Learn How to Ice Skate?
Group/private lessons available from PSA
figure skating professional
Lisa Viereck
CFSA Gold Test Medalist &
28+ years Recreational/Competitive
Coaching Experience.

**Lace up your skates and
have some holiday FUN on the ice!**

Contact Lisa Viereck for Ice skating lessons:
lisaviereck@gmail.com or 206-852-2289

Newport Hills Community Club Santa Claus Tour Route Map



Newport Hills Community Club

Winter 2010 Newsletter

5806A 119th Ave SE
PMB #222
Bellevue WA 98006